

Product datasheet for **TA309752**

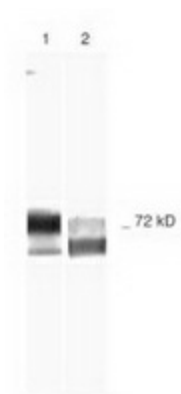
MMP2 Mouse Monoclonal Antibody [Clone ID: 2C1]

Product data:

Product Type:	Primary Antibodies
Clone Name:	2C1
Applications:	WB
Recommend Dilution:	WB, IHC, ICC, IP, ELISA
Reactivity:	Human, Mouse, Rat
Host:	Mouse
Isotype:	IgG1, kappa
Clonality:	Monoclonal
Immunogen:	Activated recombinant human MMP-2.
Formulation:	PBS and 0.05% Sodium Azide
Concentration:	1 mg/ml
Purification:	Protein G purified
Gene Name:	matrix metalloproteinase 2
Database Link:	NP_004521 Entrez Gene 17390 MouseEntrez Gene 81686 RatEntrez Gene 4313 Human
Synonyms:	CLG4; CLG4A; MMP-2; MMP-II; MONA; TBE-1
Protein Families:	Druggable Genome, Protease
Protein Pathways:	Bladder cancer, GnRH signaling pathway, Leukocyte transendothelial migration, Pathways in cancer



[View online »](#)

Product images:

Western Blot: Metalloproteinase-2 Antibody -
Samples: Lane 1 - Human Recombinant MMP-2.
Lane 2 - Schwann Cell Culture Medium Run on
10% SDS-PAGE, followed by electroblot to
nitrocellulose and slot blot immunolabeling.
Antibodies: primary - anti-Metalloproteinase-2,
secondary - anti-mouse-biotin. Detection: avidin-
HRP. Chromagen: DAB/H202.